

WORLD EXPO 2025 NEWS 「KIZUNA –絆– News letter」

“Kizuna” is the Japanese word for “bond.”

Issued April 2, 2025, Vol.48

11 days to go until the opening of Expo 2025 Osaka, Kansai, Japan...



The Expo's opening is right around the corner, with many pavilions being completed as we speak. In addition, an official guidebook was released on March 19, offering detailed information about pavilion exhibits and events. I myself purchased a ticket at Lawson the other day, and can assure you that it was smooth and easy. The Japanese government is committed to ensuring that everything is fully prepared for the Expo's opening on April 13, and I too intend to visit the venue as often as possible to ensure the Expo's success.

ITO Yoshitaka,
Minister for the World Expo 2025

*****_**_* 【Contents of this week's report】 *****_**_*

1. The Opening Ceremony of the Japan Pavilion was held This week's topics
2. Introduction of pavilion exhibits: France / Serbia / UAE / Armenia
3. Event information (June 22 -June 28)
O-MU-TSU WORLD EXPO / EO ONE WORLD DAY / Futsal Unity World Cup 2025 in OSAKA, KANSAI, EXPO / LaLaLa Yosakoi / Inochi's Pay It Forward Week / ETERNAL Art Space / Inodhi Co-Creation —MIRAI TOCHIGI— /
“Sushi and Toyama: Experiencing a Well-Being Environment” /
The Osaka Smart Health Project “Health-O” /
[Monaco] 1) Orchestre des Carabiniers du Prince 2) Académie Princesse Grace
4. Upcoming Events
- April 4-6: Test run
- April 9: Media Day
5. This Week's 60-Second Commentaries from the METI Journal
March 25: Open Factory connecting the Expo Venue and the Community.
March 26: This *Yuru-Chara (mascots)* is Amazing.
March 27: Chugoku Bureau of Economy, Trade and Industry: Promoting Okuizumo Town in Shimane Prefecture at the Netherlands Pavilion!
March 28: It's an Untrodden Path, a Digital School Festival, Everyone Gather.
Significant Contribution to Carbon Neutrality! Focus on Concrete that Absorbs CO2.



Access the official X (Twitter) account of the Secretariat of the Headquarters for the World Expo to learn how to purchase an Expo ticket at a convenience store (in this case, Lawson) with a demonstration of Minister ITO purchasing one.

https://x.com/expo2025_cas/status/1906904913336254700



EXPO 2025 Osaka, Kansai, Japan Weekly Report (March 25 – March 31)

~ 12 days to go! ~



©Expo 2025

This week's topics

The opening ceremony of the Japan Pavilion was held.

On Saturday, March 29, the Ministry of Economy, Trade and Industry and the Association held the opening ceremony of the Japan Pavilion at the EXPO National Day Hall. Approximately 400 attendees, including government officials, members of the Diet, representatives from local governments and the private sector were present. When the ceremonial *kuzudama*, a traditional Japanese decoration, was unveiled during the opening ceremony, the venue was filled with enthusiastic applause.



<https://2025-japan-pavilion.go.jp/news/250329/>



1. Introduction of pavilion exhibits

An introduction of official pavilions selected by the Ministry of Economy, Trade and Industry at its own discretion.

1) France



- The theme of the pavilion is Hymn to Love. The motif is based on the legend of the red thread, which tells of an invisible magical thread that connects the little fingers of destined lovers. Visitors are welcomed by a spiral staircase resembling a red thread at the entrance. Inside the pavilion, a vision of a new future guided by love is presented. The building itself is an artistic embodiment of the Hymn to Love.
- On the National Day, September 13th, events will be held at the EXPO National Day Hall, EXPO Arena, and EXPO Hall.

2) Serbia



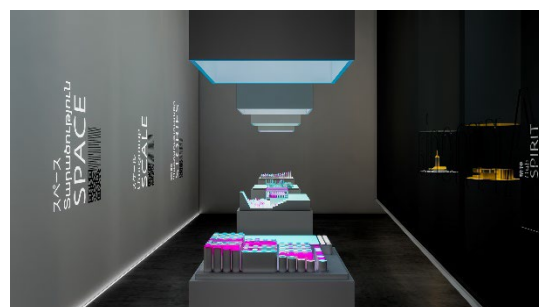
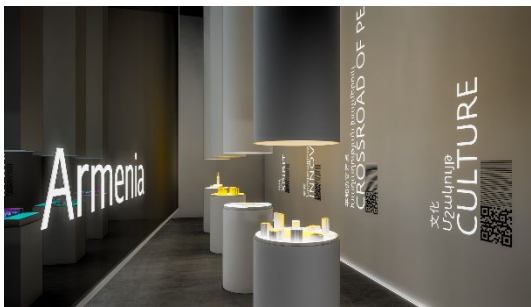
- The building is designed with the concept of a floating forest. It is modeled after a triangular island located at the confluence of the Sava and Danube rivers in Belgrade, the capital of Serbia. The structure is made from reusable materials, with plans for its reuse at the Belgrade Expo, an accredited exposition to be held in 2027. Inside the pavilion, exhibits blend analog and digital elements to create an enjoyable space for visitors of all ages, and a holographic mascot greets guests upon arrival.
- On the National Day, September 15th, an event titled Serbia Across the Centuries will introduce Serbia through traditional folk music and songs.

3)UAE



- The pavilion is inspired by the date palm tree, which is deeply rooted in the earth and reaches towards the sky. Through immersive experiences, it showcases the history of resilience in the UAE and presents a vision for an empowering future. The pavilion also highlights individuals who address global challenges through tradition and cutting-edge technology, including space explorers, healthcare professionals, and sustainability experts. Additionally, it offers traditional UAE cuisine and crafts.
- The National Day is on September 19th.

4)Armenia



(Image Source:Expo2025 Visitors)

- The exhibition space is centered around the history and culture of Armenia, recent large-scale projects, and efforts towards peace. It also showcases how global high-tech leaders are shaping the future.
- The National Day is on September 5th.

2. Event Information (June 22 -June 28)

The following are some of major events taking place in the week of June 8 -June 14, with a focus on events for which the two-month advance reservation lottery has started this week (noted with an *).

□ **O-MU-TSU WORLD EXPO ***

- Date: June 24
- Location: EXPO Hall Shine Hat
- This event features a talk show and fashion show centered around the theme of diapers, allowing participants from diverse backgrounds—different races, body types, ages, beliefs, and physical conditions—to engage and enjoy the experience while relating to the topic of diapers in a personal way.



□ **EO One World Day**

- Date: June 22
- Location: EXPO Hall Shine Hat
- Diverse young people and children from around the world will gather here to take a step towards creating the future. Young entrepreneurs as hosts will share the experiences of our predecessors and work together to create the future. This is EO One World Day.



□ **Futsal Unity World Cup 2025 in Osaka/Kansai Expo**

- Date: June 23
- Location: EXPO Arena Matsuri
- Details will be announced in the future.



□ **LaLaLa Yosakoi**

- Date: June 26
- Location: EXPO Hall Shine Hat, EXPO Arena Matsuri, and Pop-Up Stage East
- Experience the authentic *Yosakoi* Festival from Kochi. With *naruko*, clappers, in hand, visitors can join in the dance to the *Yosakoi* melody and become a dancer yourself. Music transcends borders, and dance breaks down the walls of the heart. Here, participants will connect with dancers from around the world and share moving moments together.



□Inochi's Pay It Forward Week

- Date: June 26 – 30
- Location: Gallery WEST
- This event brings together young people from around the world to engage with individuals' perspectives on life and death, recognizing and discussing them. Through this process, a chain of compassion is created, aiming to take a significant step as a legacy of the Expo towards future actions.



□ETERNAL Art Space

- Date: June 27
- Location: EXPO Hall Shine Hat
- The pioneering organization ETERNAL Art Space, known for providing innovative art experiences, will present a cutting-edge immersive audio-visual showcase at the EXPO Hall.

□Inochi Co-Creation – MIRAI TOCHIGI

- Date: June 27 - 29
- Location: EXPO Messe WASSE
- This event will showcase the rich nature and outstanding history and culture of Tochigi Prefecture to the world through interactive exhibits.

□"Sushi and Toyama: Experiencing a Well-Being Environment"

- Date: June 27 - 29
- Location: EXPO Messe WASSE
- This event will provide a unique well-being environment that showcases the dynamic topography of Toyama Prefecture through booth displays, exhibits of traditional crafts rooted in the local culture, and tastings of sushi that embody the essence of Toyama.



☐ Osaka Smart Health Project "Health-O"

- Date: June 27 - 29
- Location: EXPO Messe WASSE
- Experience treatment and prevention apps developed by startups supported by Osaka Prefecture. This event aims to position Osaka as the city known for next-generation smart health, treatment and prevention apps.

☐ [Monaco] 1) Prince's Carabiniers Orchestra 2) Monaco Royal Grace Ballet School

- Date: June 28
- Location: EXPO Hall Shine Hat
- A ballet dance performance by the Monaco Royal Grace Ballet School. This event adds a new perspective to traditional dance, bringing a fresh breeze to classical ballet.



3. Upcoming Events

- ☐ April 4 (Friday) - April 6 (Sunday): Test Run
- ☐ April 9 (Wednesday): Media Day

4. This Week's 60-Second Commentaries from the METI Journal

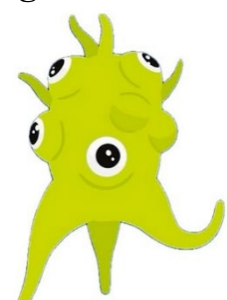
- ☐ March 25; **Open Factory Connecting the Expo Venue and the Community**

<https://journal.meti.go.jp/p/38409/>



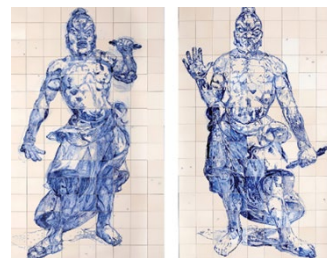
- ☐ March 26; **This Yuru-Chara is Amazing**
- Myakumyaku's first friend? "Rene" is made of Czech glass.

<https://journal.meti.go.jp/p/38522/>



- March 27; **Report from the Chugoku Bureau: Promoting Okuizumo Town in Shimane Prefecture at the Netherlands Pavilion.**
-The Soul of the Nio Crossing the Sea

<https://journal.meti.go.jp/p/38546>



- March 28; **It's an Untrodden Path, a Digital School Festival, Everyone Gather.**

<https://journal.meti.go.jp/p/38571/>



- March 31; **Significant Contribution to Carbon Neutrality! Focus on Concrete that Absorbs CO2.**

<https://journal.meti.go.jp/p/38700/>



For further information on EXPO 2025

<https://www.expo2025.or.jp/>



For back issues of the <Weekly Report>

<https://www.meti.go.jp/policy/exhibition/shuho.html>



5. Q & A's

1)Plastic bags

Did the official store at the venue allow the use of plastic bags for shopping? Wasn't the distribution of plastic bags and plastic shopping bags prohibited?

- i. According to the EXPO 2025 Green Vision announced on March 28, only paid eco-bags and paper bags with handles are to be provided for shopping at the venue, and the distribution of other types of bags is generally prohibited.
- ii. For businesses that under unavoidable circumstances require the use of plastic bags, the Association requires the submission of a usage plan and a performance report to monitor the actual usage. This rule has been communicated to relevant parties, including domestic pavilion exhibitors.
- iii. Based on this rule, the official store at the Expo venue sells eco-bags and paper bags with handles for a fee. In the event of rain, reusable plastic bags with die-cut handles can be sold for a fee, provided that a usage plan has been submitted.

2)Prayer facility

There are reports that the Japan Association for the 2025 World Exposition refused to expand the prayer facilities at the venue.

- I. The layout and placement of facilities within the venue have been decided in consultation with the Expo Producers, taking into account the preferences of official and unofficial participants.
- II. There is no truth to the claim that the association refused the request to expand the prayer rooms. There are 25 square meters allocated for both male and female prayer rooms in the rest area located in the northeast of the Quiet Forest Zone. Additionally, other rest areas within the venue can also be used for prayer.
- III. It is anticipated that various requests will be received during the event period, and efforts will be made to create an environment that is convenient for visitors from around the world.

3) Official Guidebook Accuracy

There are reports that the "Official Guidebook" for the Osaka/Kansai Expo contains unfinished illustrations and incorrect information.

- I. The Association is aware of the issues raised regarding the unfinished illustrations and incorrect information in the official guidebook for the Osaka/Kansai Expo.

- II. The Association has apologized to the illustrator and posted an apology on their website. They are also discussing corrective measures with the publisher.
- III. It is crucial that all information related to the Expo, including the guidebook in question, is accurate and easy to understand. The association is addressing this matter with the utmost seriousness.